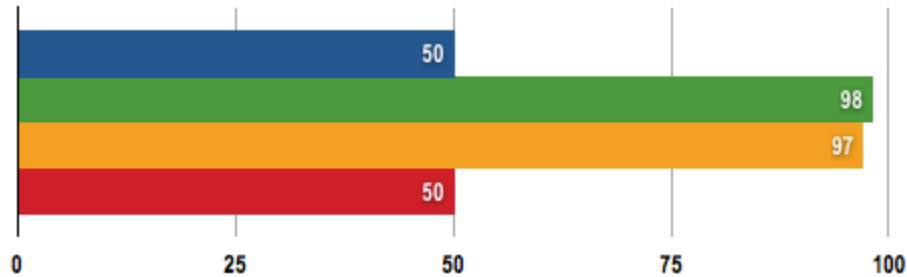


Core i7 and Xeon 5500 Series Single and Dual Comparison.

(http://www.reghardware.co.uk/2009/04/01/review_cpu_intel_xeon_5500/print.html)

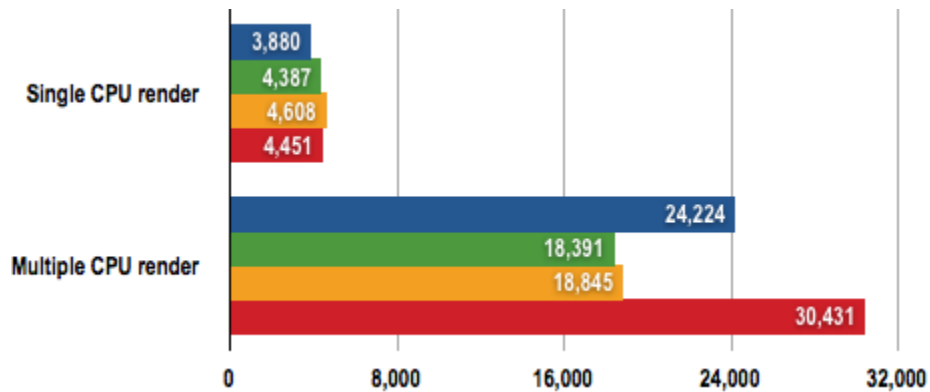
POV-Ray



Rendering time in Seconds (s)
Shorter bars are better

- Intel D5400XS, 2xCore 2 Extreme QX9775 3.20GHz, 4GB 2-channel DDR2 FB-DIMM @ 800MHz, HD 4890
- MSI X58 Pro, 1x Core i7 965 Extreme 3.20GHz, 3GB 3-channel DDR3 1066MHz RAM, GeForce GTX280
- Intel S5520SC, 1x Xeon W5580 3.20GHz, 3GB 3-channel DDR3 1066MHz RAM, GeForce GTX280
- Intel S5520SC, 2x Xeon W5580 3.20GHz, 6GB 3-channel DDR3 1066MHz RAM, GeForce GTX280

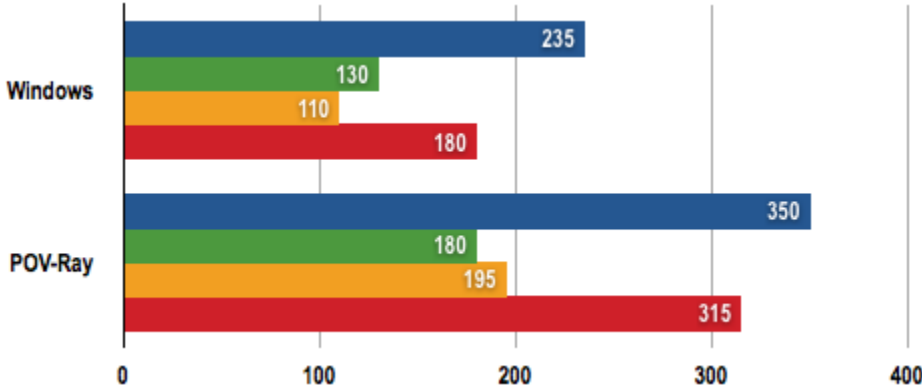
Cinebench 10 Results



Longer bars are better

- Intel D5400XS, 2xCore 2 Extreme QX9775 3.20GHz, 4GB 2-channel DDR2 FB-DIMM @ 800MHz, HD 4890
- MSI X58 Pro, 1x Core i7 965 Extreme 3.20GHz, 3GB 3-channel DDR3 1066MHz RAM, GeForce GTX280
- Intel S5520SC, 1x Xeon W5580 3.20GHz, 3GB 3-channel DDR3 1066MHz RAM, GeForce GTX280
- Intel S5520SC, 2x Xeon W5580 3.20GHz, 6GB 3-channel DDR3 1066MHz RAM, GeForce GTX280

Power Draw Results



- Intel D5400XS, 2xCore 2 Extreme QX9775 3.20GHz, 4GB 2-channel DDR2 FB-DIMM @ 800MHz, HD 4890
- MSI X58 Pro, 1x Core i7 965 Extreme 3.20GHz, 3GB 3-channel DDR3 1066MHz RAM, GeForce GTX280
- Intel S5520SC, 1x Xeon W5580 3.20GHz, 3GB 3-channel DDR3 1066MHz RAM, GeForce GTX280
- Intel S5520SC, 2x Xeon W5580 3.20GHz, 6GB 3-channel DDR3 1066MHz RAM, GeForce GTX280